

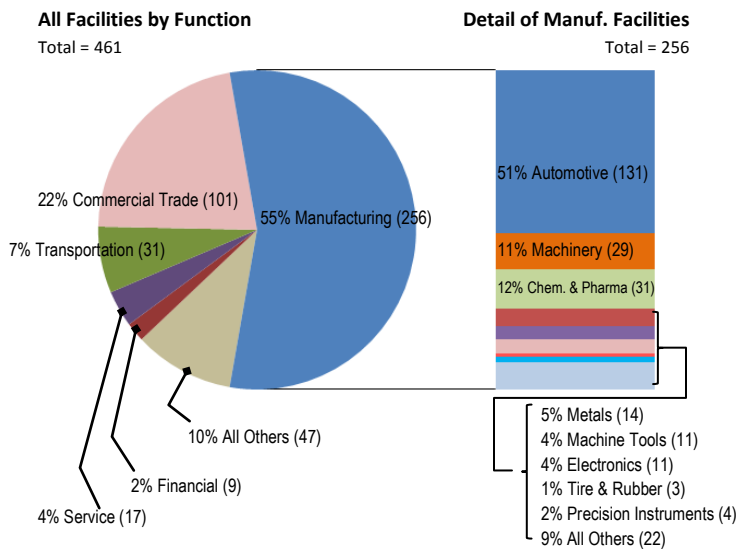
# 2015 Japanese Direct Investment Survey: Summary of Ohio Results (as of October 1, 2015)

The Consulate General of Japan in Detroit annually surveys Japanese-owned facilities and Japanese nationals in Ohio. As the 2015 data indicate, Japanese investment contributes significantly to state and local economies.

## FACILITIES

Japan ranks among the top foreign investors in Ohio with 461 facilities. The majority of Japanese facilities (256) are manufacturers, 51% of which are automotive-related. There are 101 commercial trade operations, accounting for 22% of all facilities.

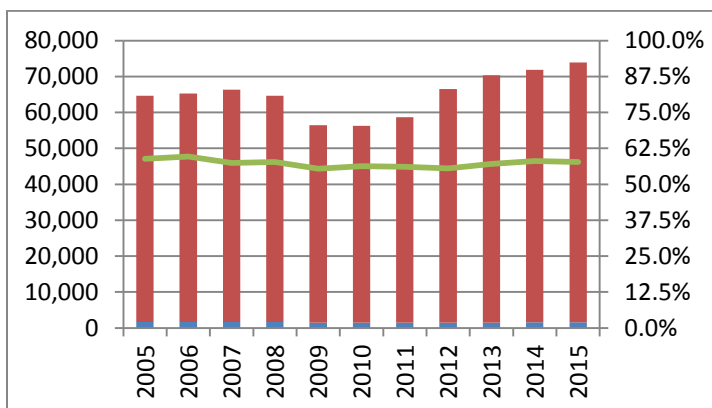
**Figure 1: Japanese Facilities by Sector**



## EMPLOYMENT

Japanese facilities provide 73,913 jobs in Ohio, 98% of which are held by Ohioans.

**Figure 2: Long-term Japanese Employment Trends**



NOTE: The blue portion of the columns indicates the number of Japanese staff; the red portion, American staff. The green line marks the total percentage of manufacturing employees.

## GEOGRAPHIC DISTRIBUTION

The central region's 137 facilities, which provide 30,008 (40% of total) jobs, are mostly automotive production related. Other areas of the state, such as the southwest and northeast, are home to Japanese businesses in a diverse range of sectors including chemicals, pharmaceuticals and rubber.

**Figure 3: Japanese Investment by Region (Top Counties)**

Region	Facilities	Total Employees	Manufacturing Employees
<b>Central</b>	137	30,008	15,595
• Franklin County	85	5,809	2,135
• Union County	14	9,070	4,101
<b>Southwest</b>	101	6,795	2,862
• Hamilton County	54	2,378	586
<b>Northeast</b>	96	7,065	2,876
• Cuyahoga County	45	2,136	419
<b>Northwest</b>	46	9,889	7,481
• Hancock County	9	2,685	1,966
<b>Western</b>	72	18,961	13,215
• Montgomery County	16	3,029	2,030
<b>Southeast</b>	9	1,195	655

## JAPANESE POPULATION

As of January 2016, there are 13,016 Japanese nationals in Ohio, most of whom reside in the central region of the state.

**Figure 4: Japanese Population (Top 5 Cities)**

